



A Project of MarillacHealth to Expand Health Care for Mesa County



MarillacHealth has been providing affordable health care to the people of Mesa County for over 36 years. Our patients and services have multiplied and diversified. As of autumn 2024, Marillac operates in eight locations in rented, borrowed and donated spaces. In order to continue to meet the healthcare needs of our community, we need to expand and to build a new health center that is easily accessible to Grand Junction's east end of the valley.



Rod - Behavioral Health Provider

Our vision is a community where every resident has access to quality care.

MarillacHealth opened in 1988 after a sudden economic downturn left thousands of Mesa County residents unemployed and uncertain of their future.

St. Mary's Hospital, Sisters of Charity of Leavenworth, and community leaders saw the need (thousands of people without health care) and responded. The original Marillac Clinic was tiny — just 2 exam rooms — but its doors were open and welcoming.

MarillacHealth's preventive care and expertise in managing chronic conditions helps keep the local health care system in balance. Without Marillac, many lower-income families would turn to emergency rooms for medical needs — straining precious resources and driving up health care costs. Research indicates when people do not have a primary care physician they overuse the ER.

MarillacHealth was a key leader in Mesa County's response to and recovery from the COVID-19 pandemic, by safeguarding staff, patients, and visitors, and providing uninterrupted health care for patients.

What Sets Marillac Apart?

Our Mission. For 36 years we have quietly provided health care services to thousands of our Mesa County neighbors, no matter their age, income level, or insurance status.

Our Approach. We are a healthcare home, delivering integrated, team-based care to all of our patients, so that everyone has access to doctors, dentists, behavioral health specialists, case managers, and health care navigators. Patients receive whole-body primary care under one roof: we are a one-stop-shop for medical, dental, and behavioral services that are patient-centered. And we constantly strive to improve our care by engaging and listening to our patients, partners, employees, and the community.

We Remove Barriers. A barrier is anything that makes it harder for a person to receive health care, like lack of health insurance, limited income, unreliable or no transportation, and inability to leave work to receive care. Our care teams work with patients to overcome barriers. And our sliding fee discount program makes health care affordable.

Patients Hold Seats on the Board of Directors. More than half of the Directors are patients, providing invaluable perspectives that help guide the organization.

Meet Your Neighbors... Patients at MarillacHealth



MarillacHealth provides care for 12,000 patients annually; one-third of these are children

"We are Mike and Kiley and these are our boys. Mike is a sushi chef and restaurant manager in Grand Junction, and I recently earned my nursing degree at Colorado Mesa University. We chose to go to Marillac's dental clinic when our oldest was 2 years old - now he's 15 and we are still coming! All three boys see Dr. Kate Hart, the Pediatric Dentist, because she always makes them feel comfortable. When our youngest needed an oral surgeon, Marillac helped us along the way. We wouldn't go anywhere else. We trust Dr. Kate."

MarillacHealth provides...

- Primary medical care
- Behavioral health care
- Dental care

95% of our patients are low-income:

- 61% Medicaid
- 12% Medicare
- 18% Uninsured
- 9% Commercial Insurance



"My name is Rachael and I own a coffee shop in Clifton. My family and I love Marillac because everyone who has helped us over the many years has been professional, kind, and caring. When I was a young single mom, the sliding scale was instrumental in making my family's health and dental care affordable. Without Marillac, I don't know how I would have stayed on top of everything!"

Meeting the Challenge of Future Health Care

Patients tell us they want health care that is close to home. Through a recent survey, Marillac patients from 14 zip codes selected Clifton (41%) and Grand Junction (42%) as preferred choices for clinic site locations. We are building in between these zip codes on 29 ½ Road.

Health care that is co-located with community services is super convenient. Marillac patients give their thumbs-up to locating care sites with other health services, retail businesses, or public/government campuses.

Patients need and deserve health care that is respectfully delivered for their cultural beliefs, race, languages, generational norms, gender orientations, physical abilities, and different levels of health literacy.



Dr. Jennifer Stroh

We need to open New Doors *to* Health

Marillac's Main Clinic on the St. Mary's Hospital campus has been our cherished home since 1998. But, with patients and operations more than doubling in size, the lack of clinic space and parking have greatly hampered patient care.

To meet these growing needs, it is time to open *New Doors to Health*. We will build a new health center next to the Mesa County Community Services campus, establishing it as our center of operations. With generous investment in this much-needed health center, ***New Doors to Health*** soon will welcome an additional 3,000 new patients.

**We provide
integrated care
for everyone**



PRIMARY MEDICAL CARE

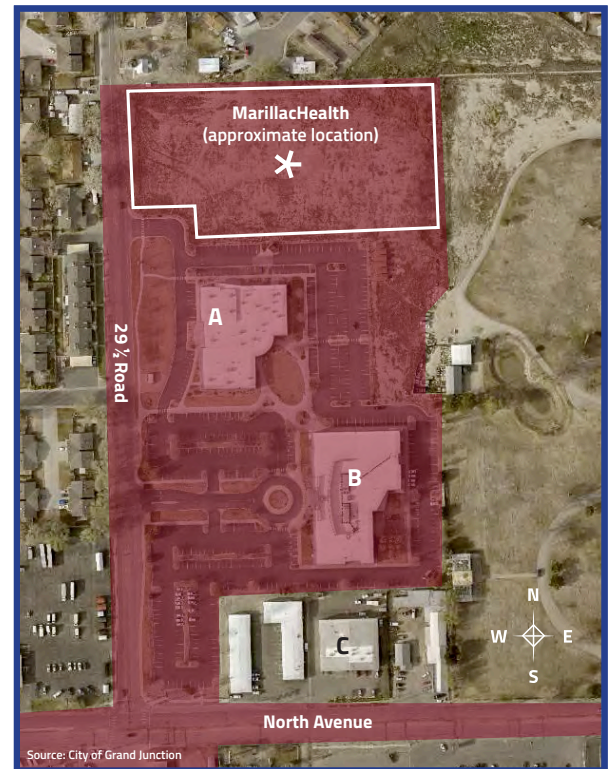


COMPREHENSIVE DENTAL CARE

Part of Something Bigger

MarillacHealth carefully studied the healthcare needs of Mesa County. We asked, where do most people live, shop, and attend school? Where do they prefer to receive their healthcare? How can we make healthcare convenient?

One theme that emerged was the preference for healthcare being co-located with other services. So when a property became available next to the Mesa County Community Services campus on the east side of Grand Junction, we knew we had found an ideal location.



- ✳ Marillac's new Health Center (approx. location)
- A Mesa County Workforce Center
- B Mesa County Department of Human Services
- C Commercial Business

What Parts of Mesa County Lack Access to Healthcare?

Despite the population density of Clifton and Fruitvale, the east end of the Grand Valley is a health care desert.

- Limited options for care available east of 28 1/4 Road
- 48% of Mesa County residents live in unincorporated areas with fewer amenities and services
- One-half of Marillac's current patient population resides in the Clifton, Fruitvale and Palisade areas

Among Clifton/Fruitvale's 48,000 residents, many suffer substantial hardship, and needs are great.

- Clifton's Median Household Income is \$49,796 (\$18,281 less than Mesa County)
- Unemployment in the area is around 4.5%
- *Nearly 20,000 persons in Clifton/Fruitvale rely on Medicaid (public health insurance)
- *In Clifton, 23% of households qualify for SNAP (food purchasing assistance)
- *One in 5 households is of minority status

*Mesa County Public Health's 2021-2023 Community Health Needs Assessment (CHNA)



INTEGRATED BEHAVIORAL HEALTH CARE



PHARMACY SERVICES

Features of Our New Clinic

- Capacity to serve an additional 3,000 new patients at this site
- Abundant parking
- Multiple medical pods and full-scope dental clinic
- Comfortably-sized passages and rooms for patients of all ages, abilities and needs
- On-site Eligibility and Enrollment Specialist
- Low cost pharmacy with indoor counter service and drive-through access
- Areas that use color and abundant natural light
- Spaces that respect all generations, so that children, parents, and older family members can relax in our care
- Work areas designed to optimize team-based care workflows, safety, and security
- Separate lobby areas for patients and families
- Located next to Mesa County Workforce Center and Community Services Building Campus
- New partnership with **CMU Tech** to offer dental and medical assisting, dental hygiene, and pharmacy technician training programs in the new facility, which in turn expands workforce development



"I'm Keith. I grew up in Texas and then Grand Junction at a time when kids had a lot of freedom. I took that opportunity to heart and tried a lot of things, which led to a lot of failures but also success. After college and marriage, I was able to make a lot of money and have a wonderful life with kids and a wife. When I started feeling sick, I never thought I would spend years and all my savings trying to be well. But I did, and that led me to Marillac. I have never been to a doctor that has made me feel more comfortable and accepted than here. Marillac cares. Everyone deserves to have a fair shot at good health care."

Community Benefits

Better access to health care resources. With more professional care teams, Marillac will be able to add more appointments and more people will get the care they need, when they need it.

New jobs. With the new clinic comes 20 new jobs for people with a range of skills and expertise representing dental, medical, accounting and other careers.

More customers for area businesses. Patients and staff will shop area stores, restaurants, and other businesses.

A healthier community. If a neighbor or family member sees a doctor or dentist, they share that experience with others. If one person has positive outcomes, it's likely others will aspire to the same.



"My name is Dee. In 2015 my husband and I moved from Branson, Missouri for a new job. After arriving it took almost a year to hire on, so we were uninsured. I was so worried because I had some medical and prescription needs. A friend told me about Marillac and their services. They took care of my health needs and it was affordable due to the sliding fee program. I was so thankful for their help. When asked to consider joining the board of directors, I jumped at the chance! It's exciting to be a part of Marillac, which is helping so many in our community. I live in the Fruitvale area, so this new clinic will be conveniently located."



We need your help



The Nielsen Family

Our community needs the expanded capacity to care that this project provides. Your contribution will help make that possible.

To open these **New Doors to Health**, we welcome gifts from every person and organization that values health care for all. This \$21 million project funded by grants, community donations, and the new market tax credit program, will carry us to the next generation of service to our community's most valuable resource: our people. Thank you for helping us reach this goal!

Tax-Exempt Status

MarillacHealth is a 501(c)3 organization. Donations are tax-exempt as allowed by IRS regulations.

Enterprise Zone

Marillac's new building is located within a designated Enterprise Zone. Cash donations of \$50 or more can receive a 25% credit on a State of Colorado tax form. In-kind donations can receive a 12.5% tax credit.

How to Donate

Online donations can be made at MarillacHealth.org or scan this:

Or you can mail donations to our office:

MarillacHealth
Attn: New Doors
2333 N. 6th Street
Grand Junction, CO 81501



*With your help, we will provide health care
to more of our neighbors and
keep our community healthy...
inside our "new doors".*



New Doors to Health is aligned with Marillac's Strategic Business Plan, which calls for expanded access for those living in locations that lack health care services.

Three principles guide the future for MarillacHealth:

- Stay informed by our patients and community
- Continue to make high-quality health care accessible, affordable and patient-friendly
- Explore local needs and pursue strong partnerships in health care delivery

MarillacHealth will continue as a leader in community health care. It is our privilege to serve as many lower income individuals and families as possible, and to provide high quality, cost effective care.



For more information, contact:

Kristy Schmidt
Chief Development Officer
970.200.1630
Kristy.Schmidt@MarillacHealth.org